

From: Christian Crowley
To: [Randal Bowman](mailto:Randal.Bowman); Christian.Crowley@ios.doi.gov
Cc: [Benjamin Simon](#); [Sarah Cline](#); [Adam Stern](#); [Ann Miller](#)
Subject: National Monuments Rev. - Data Call
Date: Monday, May 08, 2017 6:06:44 PM
Attachments: [Call for Data Related to Review of National Monuments.docx](#)
[image001.jpg](#)
[image002.jpg](#)

Greetings,
?
Please find attached a draft of the call for data, outlining the documents we would like to collect, and the information we are interested in for each of the national monuments under review. The attachment includes a list of the monuments (per the DoI press release dated May 5, 2017).
?
We have also put together a timeline for the various phases of the interim and full reviews. Please see below for a table version, as well as a Gantt chart for each review. Please send along any questions or comments that come up.
?
Best regards,
Christian
?

Work Stages	Interim Report on Bears Ears (this is called for explicitly in EO 13792)	Final Report on Full List of Monuments
PPA develops data call	Monday 5/8	Monday 5/8
Randy B sends data call	Thursday 5/11	Thursday 5/11
Bureaus respond to data call	Thursday 5/11 ? Tuesday 5/16	Thursday 5/11 ? Friday 6/2
PPA analyzes data	Tuesday 5/16 ? Friday 5/19	Friday 6/2 ? Wednesday 6/14
PPA writes draft report	Friday 5/19 ? Tuesday 5/23	Wednesday 6/14 ? Monday 7/3
Holiday	n/a	Tuesday 7/4 (Independence Day)
PPA-internal review of draft report	n/a	Wednesday July 5 ? Friday 7/7
PPA updates draft report	n/a	Monday 7/10 ? Friday 7/14
PPA delivers draft report to Randy	Tuesday 5/23	Friday July 14
Randy & co. review and comment on draft	Tuesday 5/23 ? Friday 5/26	Friday July 14 ? Friday 21
PPA receives comments on draft report	Friday 5/26	Friday 7/21
Holiday	Monday 5/29 (Memorial Day)	n/a
PPA addresses comments in draft final report	Tuesday 5/30 ? Wednesday 5/31	Friday 7/21 ? Friday 7/28
PPA delivers draft final report to Randy	Wednesday 5/31	Friday 7/28

?

cid:image005.jpg@01D2C810.7F04F930

?

cid:image006.jpg@01D2C810.7F04F930

?

Call for Data Related to Review of National Monuments, in Relation to EO 13792 (April 26, 2017)

Please help us gather information about each of the items listed below, for each of the National Monuments listed below in Table 1.

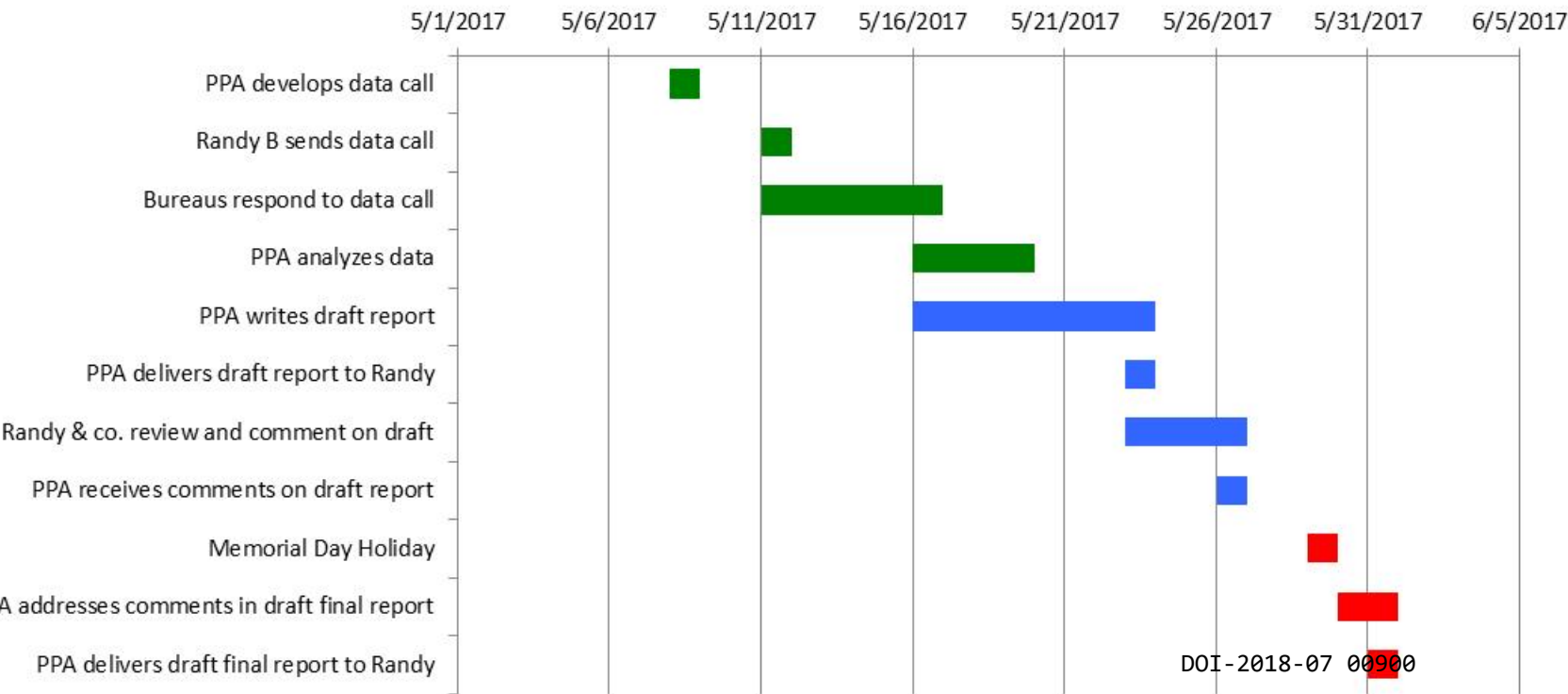
1. Documents Requested
 - a. Resource Management Plans/Land Use Plans
 - b. Record of Decision
 - c. Public Scoping Documents
 - d. Presidential Proclamation
2. Information on activities permitted at the Monument, including annual levels of activity from the **date of designation to the present**
 - a. Recreation - annual visits to site
 - b. Energy - annual production of coal, oil, gas and renewables (if any) on site; amount of energy transmission infrastructure on site (if any)
 - c. Minerals - annual mineral production on site
 - d. Timber - annual timber production on site (in board-feet, CCF, or similar measure)
 - e. Grazing - annual grazing on site (AUMs permitted and sold)
 - f. Subsistence - participation rates for subsistence activities occurring on site (fishing, hunting, gathering); quantities harvested; other quantifiable information where available
 - g. Cultural - list of cultural uses/values for site; number of sites; other quantifiable information where available
2. Information on activities occurring during the **5 years prior to designation**
 - a. Recreation - annual visits to site
 - b. Energy - annual production of coal, oil, gas and renewables (if any) on site; amount of energy transmission infrastructure on site (if any)
 - c. Minerals - annual mineral production on site
 - d. Timber - annual timber production on site (in board-feet, CCF, or similar measure)
 - e. Grazing - annual grazing on site (AUMs permitted and sold)
 - f. Subsistence - participation rates for subsistence activities occurring on site (fishing, hunting, gathering); quantities harvested; other quantifiable information where available
 - g. Cultural - list of cultural uses/values for site; number of sites; other quantifiable information where available
3. Information on activities that likely would have occurred annually from the date of designation to the present **if the Monument had not been designated**
 - a. Recreation - annual visits to site
 - b. Energy - annual production of coal, oil, gas and renewables (if any) on site; amount of energy transmission infrastructure on site (if any)
 - c. Minerals - annual mineral production on site
 - d. Timber - annual timber production on site (in board-feet, CCF, or similar measure)
 - e. Grazing - annual grazing on site (AUMs permitted and sold)

- f. Subsistence - participation rates for subsistence activities occurring on site (fishing, hunting, gathering); quantities harvested; other quantifiable information where available
 - g. Cultural - list of cultural uses/values for site; number of sites; other quantifiable information where available
- 4. Changes to boundaries - dates and changes in size
- 5. Public Outreach prior to Designation - outreach activities conducted and opportunities for public comment
- 6. Terms of Designation

Table 1. List of National Monuments Included in Review (per DOI Press Release dated May 5, 2017)

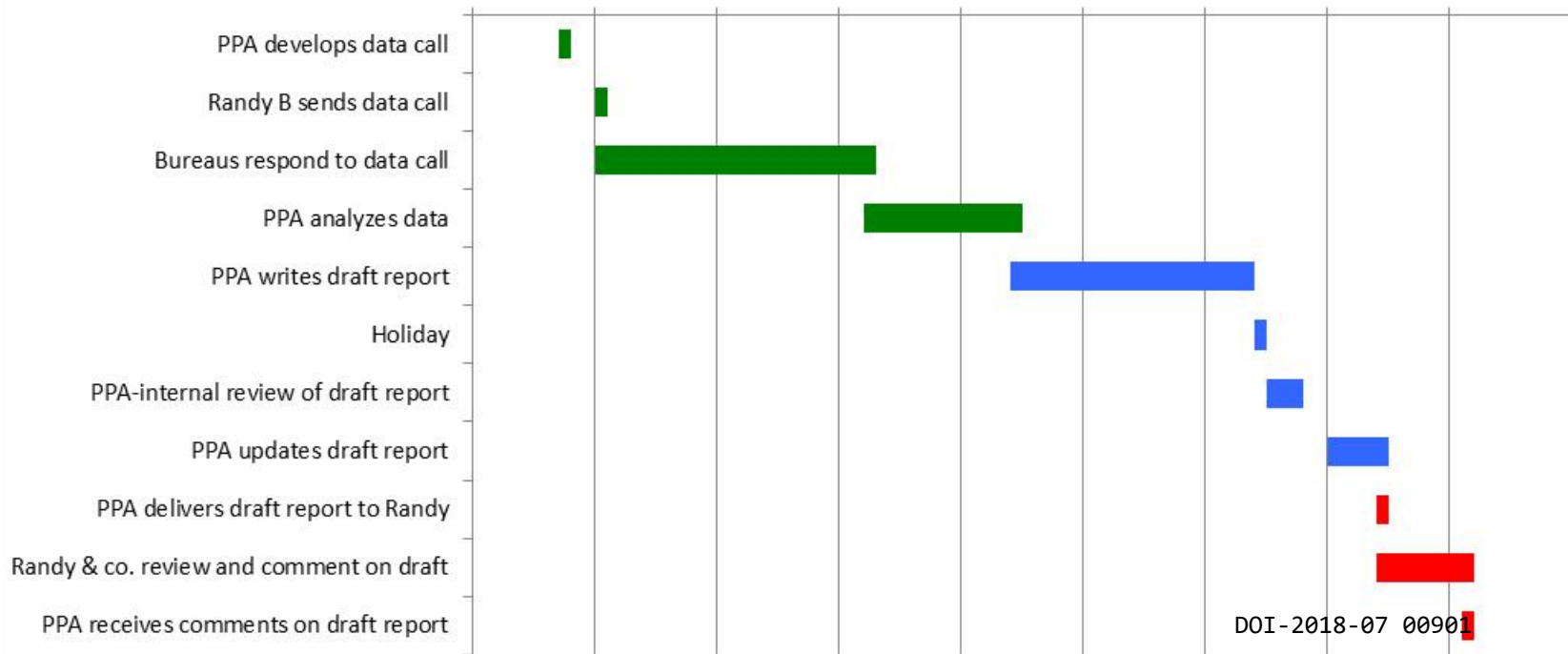
National Monument	Location	Managing Agency
Basin and Range	Nevada	BLM
Bears Ears	Utah	BLM, USFS
Berryessa Snow Mountain	California	USFS, BLM
Canyons of the Ancients	Colorado	BLM
Carrizo Plain	California	BLM
Cascade Siskiyou	Oregon	#N/A
Craters of the Moon	Idaho	NPS, BLM
Giant Sequoia	California	USFS
Gold Butte	Nevada	BLM
Grand Canyon-Parashant	Arizona	BLM, NPS
Grand Staircase-Escalante	Utah	BLM
Hanford Reach	Washington	FWS, DOE
Ironwood Forest	Arizona	BLM
Mojave Trails	California	BLM
Organ Mountains-Desert Peaks	New Mexico	BLM
Río Grande del Norte	New Mexico	BLM
Sand to Snow	California	BLM, USFS
San Gabriel Mountains	California	USFS
Sonoran Desert	Arizona	BLM
Upper Missouri River Breaks	Montana	BLM
Vermilion Cliffs	Arizona	BLM
Katahdin Woods and Waters	Maine	NPS
Marianas Trench	CNMI/Pacific Ocean	FWS
Northeast Canyons and Seamounts	Atlantic Ocean	NOAA, FWS
Pacific Remote Islands	Pacific Ocean	FWS
Papahānaumokuākea	Hawai'i/Pacific Ocean	NOAA, FWS
Rose Atoll	American Sāmoa/Pacific Ocean	FWS

National Monuments Review (EO 13727) - Interim Report (Bears Ears NM)



National Monuments Review (EO 13727) - Full Report

5/1/2017 5/11/2017 5/21/2017 5/31/2017 6/10/2017 6/20/2017 6/30/2017 7/10/2017 7/20/2017 7/30/2017



DOI-2018-07 00901